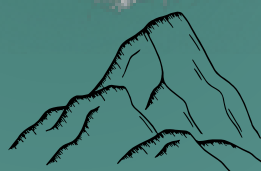


# 塞外风情 北疆之旅

The Beautiful Journey Of North XinJiang

运通假期  
CETT Holiday



那拉提特别安排雪莲谷，近距离观赏天山雪山风光

special arranged a visit to Snow Lotus Valley for a close-up view of the breathtaking scenery of the Tianshan Mountains



- 乌鲁木齐 Urumqi
- 富蕴 FuYun
- 布尔津 Burqin
- 喀纳斯 Kanas

- 奎屯 KuyTun
- 伊宁 YiNing
- 那拉提 NaLati
- 特克斯 TeKes



雅丹地貌 ➡ 五彩滩

国家地质公园 ➡ 可可托海

人间仙境 ➡ 喀纳斯自然景观保护区

大自然奇观 ➡ 魔鬼城

大西洋最后一滴眼泪 ➡ 赛里木湖

Yardang Landform ➡ Colorful Sands

National Geopark ➡ KeKeTuoHai

Paradise on Earth ➡ Kanas Nature Reserve

Natural Miracle ➡ Devil City

The Last Tear of the Atlantic ➡ Sayram Lake

- 全程4星+准5星酒店 4 Stars + Local 5 Stars Hotel
- 全程无购物 No Shopping
- 有车购 in-Coach Shopping



03-21455177



www.chinaexpress.com.my



12天11晚

运通假期  
CETT Holiday

Tour Code : 12NXJ



## 塞外风情北疆之旅

第一天 吉隆坡✈️ 中转✈️ 乌鲁木齐

齐集于吉隆坡第一航站楼国际机场，乘搭国际航班经中转飞往乌鲁木齐。

酒店：准5★ 锦江国际酒店店或同级

第二天 乌鲁木齐🚌 富蕴 （约5.5小时车程）

（早/午/晚餐）

【新疆古生态园】- 全疆规模最大的侏罗纪硅化木保护基地、汗血宝马基地、野马美术馆、穿越古尔班通古特沙漠。在这里，人们仿佛穿越到亿万年前那个森林蔽日、恐龙飞奔的世界。途径卡拉麦里有蹄类自然保护区。

酒店：准4★ 富蕴山河酒店或同级

第三天 富蕴🚌 布尔津 （约5小时车程）

（早/午/晚餐）

【可哥苏里湖】既有西湖的精緻秀美，又有白洋淀的葦蕩迷宮，一派“沙鷗翔集”、“魚翔淺底”的水鄉澤國美景。遠處高大的裸露體褶皺溝壑依稀可見。远观【伊雷木特湖】- 蒙古語意為“旋渦”，是卡拉先格爾地震斷裂帶上形成的斷陷窪地，被譽為“藍色的河灣”。【可可托海地質公園】（含区间车）- 景區由額爾齊斯大峽谷,可可蘇里,伊雷木特湖,卡拉先格爾地震斷裂帶四部分組成。沿途可以看到富龟石,白桦林,夫妻树,石门。【額爾齊斯大峽谷】- 奔流不息的額河水，穿行於山脈、草地、密林中，畫出了一幅幅精美絕倫的畫面。【神鐘山】- 一块花岗岩石头即为一座山，形状如倒扣的巨大石钟，为阿尔泰山之最。【可可托海国家地質陈列馆】- 中国第一个以典型矿床和矿山遗址为主体景观的国家地质公园，加上独特的阿尔泰山花岗岩地貌景观和富蕴大地震遗迹，构成了新疆环准噶尔神秘旅游线上耀眼的一道风景线。

酒店：准4★ 友谊峰大酒店或同级

第四天 布尔津🚌 喀纳斯

（早/午/晚餐）

【喀纳斯自然景觀保護區】（乘區間車）- 是中國唯一的北冰洋水系流域區，也是唯一的古北界歐洲-西伯利亞動植物分布區，是新疆針葉林樹種和野生動物種類最多，人類影響最小，原始狀態保存最完整的地區。【觀魚亭】（含区间车）- 站在觀魚亭上可以俯瞰喀納斯湖全景。【图瓦人家访】- 参观图瓦族人的生活住处，同时可以品尝图瓦族特色小吃和欣赏图瓦族乐器表演。【喀纳斯湖畔栈道漫步】- 欣赏西伯利亚泰加林。【神仙湾、月亮湾、卧龙湾】- 下车拍照

酒店：准4★ 鸿福生态度假酒店或同级

第五天 喀纳斯🚌 布尔津

（早/午/晚餐）

【禾木村】（含区间车）- 最出名的就是万山红遍的醉人秋色，炊烟在秋色中冉冉升起，形成一条梦幻般的烟雾带，胜似仙境。在禾木村子周围的小山坡上可以俯视禾木村以及禾木河的全景：空谷幽灵、小桥流水、牧马人在从林间扬尘而过。徒步前往【哈登观景台】- 俯视禾木村全景。【漫步禾木河畔】- 欣赏美景。前往【五彩滩】（约2.5小时车程）- 有着新疆“最美雅丹地貌”之称，由于激猛的河流冲击以及狂风侵蚀，河岸岩层抗风化能力强弱不一，轮廓便会参差不齐，而岩石含有矿物质的不同，又幻化出种种异彩，因此得名“五彩滩”。

酒店：准4★ 友谊峰大酒店或同级

第六天 布尔津🚌 奎屯

（早/午/晚餐）

前往【**乌尔禾魔鬼城**（约3小时车程）】（含小火车）- 因强风和雨水剥蚀而造就出来的罕见地貌，因土丘形状怪异，脚下都是干裂黄土，寸草不生，一片死寂，加上据说夜里这里会传出鬼魅的哀呼声，因而也被叫做魔鬼城。远观【**百里油田**】

酒店：准5★ 润锦国际酒店或同级

第七天 奎屯🚌 伊宁

（早/午/晚餐）

前往【**赛里木湖风景区**（约4小时车程）】（含环湖）- 是新疆海拔最高、面積最大、風光秀麗的高山湖泊，有「大西洋最後一滴眼淚」說法。賽里木湖古稱「淨海」。【**成吉思汗点将台**】- 历史记载当年成吉思汗征战到这里时，曾在这里安营扎寨、饮马休整，还让次子察合台在果子沟开凿山路和建桥，察合台圓滿完成任务，蒙古大军得以顺利杀向中亚。续游【**海西草原**】。往伊宁市（约2小时车程），途径车览果子沟大桥风光。

酒店：准5★ 骏锦酒店或同级

\*\*景点的先后顺序可根据具体情况有所调整 \*倘若原定的景点不对外开放，将由其他景点取代 \*旅游旺季期间，住宿酒店可能安排在其他城市\*\*

第八天 伊宁  那拉提 （约4小时车程） （早/午/晚餐）

【那拉提大草原】（含区间车）-集草原、沟谷、森林于一体，植被覆盖率高，野生动物资源丰富，因自然生态景观和人文景观独具特色，而被誉为“天山绿岛”“绿色家园”“五彩草原”。主要景点有天界台、游牧人家、塔吾萨尼（哈萨克语意为“美丽的山沟”）、天仙台、沃尔塔交塔观景台。【雪莲谷】（含电瓶车）-因山顶雪峰外形酷似雪莲并且常年盛开因此而名雪莲谷，海拔约2200米，山顶终年白雪皑皑由山草甸峡谷等景观组成。

酒店： 准5\* 文旅那拉提度假酒店或同级

第九天 那拉提  特克斯 （约3.5小时车程） （早/午/晚餐）

【喀拉峻大草原】（含区间车）-是世界自然遗产保护地，由雪山冰川、河流湖泊、高山森林、五花草甸、花斑森林、夷平面森林草原、峡谷、野生动植物等组成，景观层次丰富完整。依次游览【鲜花台】【猎鹰台骑马】。

【特克斯八卦城】-因八卦布局而闻名，被称为“八卦城”。

酒店： 准5\* 凤凰国际酒店或同级

第十天 特克斯  伊宁 （约2.5小时车程） （早/午/晚餐）

【喀赞其民俗旅游区】（含乘六根棍马车、维吾尔族家访、品尝手工霜淇淋、欣赏维吾尔族歌舞表演）-是北疆唯一一个大型原生态以反映维吾尔族风情为主的人文景区，它是伊犁城市形象的窗口，也是民族风情的生动写照。

【六星街】-是中国塞外江南之城的新疆伊犁州伊宁市的一个古老街区，始建于上世纪30年代中期（1934-1936年）。

酒店： 准5\* 骏锦酒店或同级


第十一天 伊宁  （约5小时动车时间） 乌鲁木齐 （早/午/晚餐）

【乌鲁木齐国际大巴扎】-新疆国际大巴扎，世界最大传统市场，汇聚中亚风情和维吾尔族文化，五光十色的商品中融入了伊斯兰艺术的精髓。探索这座市场，不仅是购物，更是一场文化之旅。

酒店： 准5\* 锦江国际酒店或同级

第十二天 乌鲁木齐  中转  吉隆坡

送往机场乘机经中转返回温暖的家，结束难忘的北疆之旅

\*\*\*\*\*加点项目  1. 国际大巴扎歌舞宴 - RMB298      2. 禾木村云霄峰索道 - RMB298

\*\*景点的先后顺序可根据具体情况有所调整 \*倘若原定的景点不对外开放，将由其他景点取代 \*旅游旺季期间，住宿酒店可能安排在其他城市\*\*

Updated on : 01/01/2024

特色风味



- 新疆大盘鸡
- 新疆烤全羊
- 冷水鱼风味
- 新疆手抓肉
- 阿吾丹抓饭或伴面
- 野蘑菇炖鸡
- 八卦城风味
- 秘制红烧肉
- 锡伯族风味
- 阿吾乐风情宴
- 高铁便当



ADDITIONAL INFO

- Passport & Visas – Please ensure passport is valid for at least 6months from the return date of the trip and all necessary visas and permits have been acquired
- Travel Insurance- Its recommended that you purchase a travel insurance before departure
- 护照与签证-请确保护照有效期从回程日期算起至少6个 以上及所有所需提前申请的签证和准证
- 旅游保险-建议出发前购买旅游保险

Terms & Conditions

- Tours are conducted in manderine.
- Hotel accommodation on twin share or triple share basis. Single room occupancy is at additional cost.
- Please note that triple room third bed shall be a roll-away bed.
- Tour fare quoted is for Malaysian, foreigners surcharge applied.
- In coach shopping- for your convenient, a variety of local snacks and products offered for sale on board the coach, if you need, please place your order with tour guide.
- For other terms and conditions please refer to overall copy of tour booking conditions.
- 导游将以中文讲解为主，如要求其他语言讲解，需征收额外费用。
- 住宿安排2人一房或三人一房，单人间将收取额外费用。
- 三人间-第三张床将是折叠式床。
- 团费仅适用于马来西亚公民， 外国人将征收额外费用。
- 车上购物-将售卖当地产品，如有需要可以跟导游购买。
- 有关其他报团细节，请参考完整报团细节



# 12 Days 11 Nights

运通假期  
CETT Holiday

Tour Code : 12NXJ



## The Journey of North Xinjiang

Day 1 Kuala Lumpur ✈️ Transit ✈️ Urumqi

Assemble at Kuala Lumpur International Airport. Take a flight to Urumqi transit at domestic airport.

Hotel : Local 5\* Jin Jiang International Hotel or sml

Day 2 Urumqi 🚌 FuYun ( appxm 5.5hrs) (B/L/D)

【Xinjiang Ancient Ecological Park】The largest Jurassic petrified wood conservation base in Xinjiang, the Sweat Blood Horse Base, the Wild Horse Art Museum, and Crossing the Gobi Desert of Gurbantünggüt.

Hotel : Local 4\* ShanHe Hotel or sml

Day 3 FuYun 🚌 Burqin ( appxm 5.5hrs) (B/L/D)

【Cocoa Suri Lake】It combines the exquisite beauty of West Lake with the reed-filled maze of Baiyangdian, presenting a picturesque wetland landscape reminiscent of 'gulls soaring in flocks' and 'fish swimming in shallow waters.' In the distance, the towering exposed folds and wrinkles of the terrain are faintly visible. View 【Yileimute Lake】-In Mongolian, it means "whirlpool." It is a fault depression formed on the Kanas-Keketuohai Seismic Fault Zone, renowned as the "Blue River Bay." 【Keketuohai geological park】(eco bus) - The scenic area is composed of four parts: the Irtysh Grand Canyon, Keketuohai, Lake Ebinur, and the Kanas-Keketuohai Seismic Fault Zone. Along the way, you can see Rich Turtle Rock, birch forests, Couple Trees, and Stone Gate. 【Irtysh grand canyon】The unceasing flow of the Ertis River, winding through mountains, grasslands, and dense forests, paints magnificent and unparalleled scenes. 【Shenzhong Peak】-A piece of granite constitutes a mountain, shaped like an inverted giant stone bell, making it the pinnacle of the Altai Mountains. 【Koktokay National Geopark】-China's first national geological park featuring typical ore deposits and mining site relics as its main landscapes.

Hotel : Local 4\* YouYiFeng Hotel or sml

Day 4 Burqin 🚌 Kanas (B/L/D)

【Kanas Scenic Reservation】(included shuttle bus) - Kanas Scenic Area stands out as the sole region in China within the Arctic Ocean watershed, uniquely preserving the historical ecological transition zone between Europe and Siberia. 【GuanYu Pavillion】(included shuttle bus)-Overlooking the panoramic view of Kanas Lake. 【Tuvan Home visit】- Explore the living quarters of the Tuvan people, taste Tuvan ethnic snacks, and enjoy traditional Tuvan musical performances. 【Kanas Lake Promenade Ramble】. 【Fairy Bay, Moon Bay, Wolong Bay】- solely stop for photo.

Hotel : Local 4\* Hongfu Lake Kanas Resor or sml

Day 5 Kanas 🚌 Burqin (B/L/D)

【HeMu villagM】(included shuttle bus) - is most famous for its intoxicating autumn colors all over Wanshan. The smoke from cooking houses rises slowly, forming a dreamlike smoke belt, which is better than a fairyland. On the hillside around Hemu Village, you can overlook the panorama view of Hemu Village and Hemu River small bridges and flowing water, horse herders passing through the forest .

【Harden Scenic Lookout】- Panoramic View of Hemu Village. 【HeMu River】- Delighting in the Picturesque Scene.

【Colorful Sands】-Most Beautiful Yardang Landform, boast diverse rock hues shaped by river impact and wind erosion, creating irregular contours.

Hotel : Local 4\* YouYiFeng Hotel or sml

Day 6 Burqin 🚌 Kuytun (B/L/D)

【Devil City of Wuerhe】(included sighthseeing train) - A unique terrain sculpted by wind and rain, featuring strange mounds with barren, cracked yellow soil. Known as the "Devil's City" due to its eerie silence and rumored ghostly sounds at night. 【Panoramic View of BaiLi Oilfield】

Hotel : RunJin International Hotel or sml

Day 7 Kuytun 🚌 YiNing (B/L/D)

【Sailimu Lake (round lake) - with the high altitude, the largest area and beautiful scenery in Xinjiang. It is also the last place favored by the warm and humid Atlantic air, so there is a saying "the last tear of the Atlantic Ocean". 【Saihu Genghis Khan's general station】- Genghis Khan camped here during his conquests, allowing his son Jochi to open mountain routes and build bridges in Gouzigou. Jochi's successful completion facilitated the Mongol army's smooth advance into Central Asia. Continue to 【HaiXi Grassland】. Proceed to YiNing (appxm 2hrs).


Hotel : Local 5\* JunJing Hotel or sml

Day 8 YiNing 🚌 NaLaTi

【Nalati Grassland】(Included shuttle bus)- Scenic Area integrates grasslands, valleys, and forests, with high vegetation coverage and rich wildlife resources. Because of its unique natural ecological landscape and cultural landscape, it is known as "Tianshan Green Island" and "Green Home". The main scenic spots are Tianjie Terrace, Nomad House, Tausani (meaning "beautiful valley" in Kazakh), Tianxian Terrace, Volta Jiaota Observation Deck. 【Snow Lotus Valley】(included buggy)- at an altitude of around 2200 meters, boasts snow-capped peaks resembling the iconic snow lotus. The mountaintop features perennial snow and diverse landscapes, including alpine meadows and valleys.


Hotel : Local 5\* Xinjiang Cultural Tourism Nalati Resort Hotel or sml

Updated on : 01/01/2024

**Day 9**      **NaLaTi**  **TeKes** (B/L/D)



【**KaLaJun Grassland**】 (included shuttle bus)-This is a UNESCO World Heritage site, composed of snow-capped mountains, glaciers, rivers, lakes, alpine forests, alpine meadows, mosaic forests, plateau forests, grasslands, canyons, and diverse wildlife. The landscape is rich and complete in various layers. Then visit to 【**Flower Pavillion**】 and 【**Falcon Pavillion**】 . 【**TeKes Eight Diagrams City**】 - famed for its octagonal layout, is commonly referred to as the "Octagonal City."

Hotel : Local 5\* Phoenix International Hotel or smi

**Day 10**      **TeKes**  **YiNing** (B/L/D)



【**KaZanQi Folk Tourism Area**】 (included a horse-drawn carriage ride, visiting Uighur families, tasting handmade frosty ice cream, and enjoying Uighur traditional song and dance performances.)-It stands as the sole extensive, untouched cultural area in Northern Xinjiang, primarily reflecting the Uighur ethnic charm. It serves as the window to the urban image of Yili and vividly depicts the ethnic ambiance. 【**YiNing LiuXing Street**】 -It is a historic district in Yining City, located in the Ili Kazakh Autonomous Prefecture of Xinjiang, China, often referred to as the "Jiangnan beyond the Great Wall." The construction of this area dates back to the mid-1930s (1934-1936).

Hotel : Local 5\* JunJing Hotel or smi


**Day 11**      **YiNing**  **Urumuqi**  (B/L/D)

【**XinJiang International Grand Bazaar**】 - the world's largest traditional market, combines Central Asian and Uighur culture, showcasing a vibrant array of products infused with the essence of Islamic art. Explore not just for shopping, but for a cultural journey."

Hotel : Local 5\* Jin Jiang International Hotel or smi

**Day 12**      **Urumqi**  **Transit**  **Kuala Lumpur**

Transfer to airport for your flight back to Kuala Lumpur

\*\*\*\*\* Optional  1. International Grand Bazaar Dance Performances Show - RMB298  
2. HeMu Village cable car to YunXiao Peak - RMB298

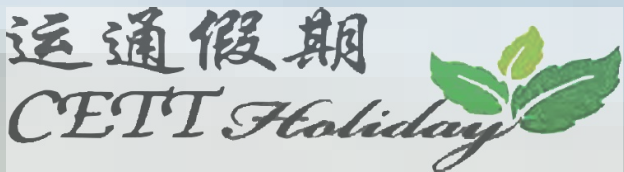
\*\*Attraction sequence subject to change. If a site is closed, an alternative will be arranged. During peak seasons, accommodations may be in other cities\*\*

Updated on : 01/01/2024



### Special Flavor

- Xinjiang Big Plate Chicken
  - Xinjiang Roast Whole Lamb
  - Coldwater Fish Delicacy
  - Xinjiang Hand-Pulled Meat
  - Awudan Hand-Pulled Rice or Noodles
  - Wild Mushroom Stewed Chicken
- Bagua City Flavor
  - Secret Braised Pork
  - Xibe Ethnic Flavor
  - Awule Cultural Feast
  - High-Speed Rail Bento



#### ADDITIONAL INFO

- 1.Passport & Visas - Please ensure passport is valid for at least 6months from the return date of the trip and all necessary visas and permits have been acquired 2.Travel Insurance- Its recommended that you purchase a travel insurance before departure
1. 护照与签证-请确保护照有效期从回程日期算起至少6个 以上及所有所需提前申请的签证和准证
- 2.旅游保险-建议出发前购买旅游保险

#### Term & Condition

- 1.Tours are conducted in manderine.
  - 2.Hotel accommodation on twin share or triple share basis. Single room occupancy is at additional cost.
  - 3.Please note that triple room third bed shall be a roll-away bed.
  - 4.Tour fare quoted is for Malaysian, foreigners surcharge applied.
  - 5.In coach shopping- for your convenient, a variety of local snacks and products offered for sale on board the coach, if you need, please place your order with tour guide.
  - 6.For other terms and conditions please refer to overall copy of tour booking conditions.
1. 导游将以中文讲解为主，如要求其他语言讲解，需征收额外费用。
2. 住宿安排2人一房或三人一房，单人间将收取额外费用。
3. 三人间-第三张床将是折叠式床。
4. 团费仅适用于马来西亚公民， 外国人将征收额外费用。
5. 车上购物-将售卖当地产品，如有需要可以跟导游购买。
6. 有关其他报团细节，请参考完整报团细节。