



# 江西仙境之旅

## The journey of wonderland JiangXi

畅游Visit:

南昌NanChang

九江JiuJiang

庐山LuShan

景德镇JingDeZhen

婺源WuYuan

龙虎山LongHuShan



全程入住4钻酒店 4Stars Hotel  
全程不进购物站 No Shopping Stop  
有车购 In coach shopping



Highlights :

- Visit World Heritage Sites LuShan
- Visit the most beautiful villages in China WuYuan
- Visit Taoist Sacred Sites LongHuShan
- Explore the Millennium Porcelain Capital JingDeZhen

行程特色:

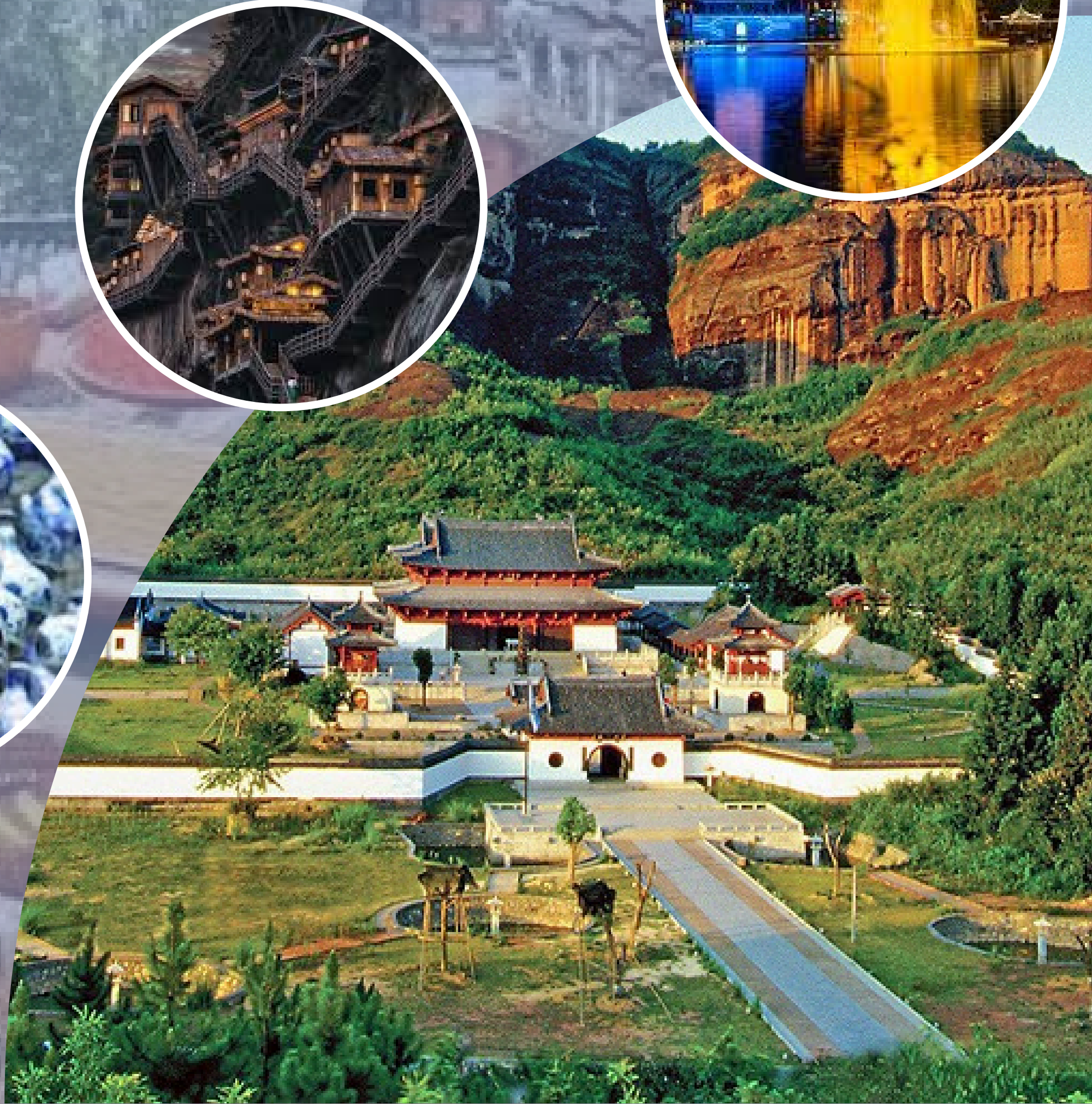
- 游览世界文化遗产 庐山
- 参观中国最美丽的乡村 婺源
- 造访道教圣地 龙虎山
- 畅游千年瓷都 景德镇



03 - 21455177

tour@chinaexpress.com.my

www.chinaexpress.com.my







# 8天7晚 江西仙境之旅



第一天 吉隆坡 南昌

(-/-/晚餐)

齐集于吉隆坡第一航站楼，乘搭国际航班飞往江西-南昌。游览【红谷滩万达广场】[万寿宫美食文化街]

酒店：国际4钻 南昌融创诺福特酒店或同级

第二天 南昌 九江 (2小时)

(早/午/晚餐)

【庐山】庐山以其景之雄、奇、险、秀而得“匡庐奇秀甲天下”的美誉，于1996年被联合国教科文组织被列为世界文化遗产。【如琴湖】因形状很象小提琴而得名的如琴湖，翠岭围抱，丰姿秀雅，水映峰峦，相映成趣，湖心有小岛，上缀水榭，与九曲桥相连，时有云雾飘渺，妙趣横生。【花径】-花径亭中一横石上刻有“花径”二字，传说系白居易手书；【锦绣谷】因第四纪冰川作用，锦绣谷这块面向西南的山间凹地，经过冰川的反复刻切，形成了一个平底陡壁的山谷。【仙人洞】洞中央“纯阳殿”内置吕洞宾石像，传说八仙中的剑仙在此修道成仙。

【牯岭街】“半边天街”商贾云集，温馨繁华，游人熙熙攘攘，欢乐祥和。【美庐别墅】所特有的一处著名的人文景观，它展示了风云变幻的中国现代史的一个侧面。“美庐”曾作为蒋介石的夏都官邸，“主席行辕”，是当年“第一夫人”宋美龄生活的“美的房子”。

酒店：准4钻\*庐山山水庐译酒店或同级

第三天 庐山 景德镇 (2小时)

(早/午/晚餐)

【瑶里风景区】素有“瓷之源、茶之乡、林之海”的美称。瑶里，古名“窑里”，远在唐代中叶，这里就有生产陶瓷的手工业作坊，因瓷窑出名而得名。【汪胡生态旅游区】-属黄山余脉，区内峰峦叠嶂，山奇石秀，古木参天。【绕南陶瓷主题园区】-完好保存宋、元、明等时期的古窑遗址，和古矿洞等瓷业遗迹，【瑶里古镇】-瑶里“高岭”是闻名世界的陶瓷圣地，是世界“高岭土”的命名地。【陶溪川】是一代景德镇陶瓷人的精神家园，是景德镇陶瓷文化推广、衍生、走向世界的最佳场所。

酒店：准4钻\*景德镇智选假日酒店或同级

第四天 景德镇 婺源 (1.5小时)

(早/午/晚餐)

【婺源篁岭】(含缆车)是由索道空中揽胜、村落天街访古、梯田花海寻芳及乡风民俗拾趣等组合。篁岭古村落属典型山居村落，民居围绕水口呈扇形阶梯状错落排布。篁岭周边有千棵古树，万亩梯田，更有四季花海。【月亮湾】婺源月亮湾因江中有一江心洲如一轮眉月而得名，它依山伴水，水面平静如镜【婺女洲度假村】为来自各地的游客呈现一处极具徽州特色的文艺小镇，深度体验“骨子里的徽州故事”。【观看非遗打铁花表演】-国家级非物质文化遗产之一，始于北宋，盛于明清，至今已有千余年历史。表演时，铁水被烧热至1600℃，手艺人用定制木板舀起后，用力击打抛向空中，刹那间，十几米高的金色火花在夜空中绽放，唯美震撼，令人目眩

酒店：准4钻 婺女洲徽市街艺术酒店或同级

第五天 婺源 上饶 (2小时)

(早/午/晚餐)

【望仙谷风景区】有江西民居特有的夯土墙、青石板路、黄墙黛瓦、原味村屋；也有松涛竹海和独具风情的赣家街市。【夜游望仙谷】

酒店：准4钻 上饶华都臻悦酒店或同级

第六天 上饶 鹰潭 (2小时)

(早/午/晚餐)

【灵山】(含索道)宗教朝觐为一体的山嶽型风景名胜区。灵山很古老，灵山很神奇，灵山不仅有优美的山水，灵山更有众多美丽的传说。

酒店：准4钻 鹰潭锦都金源酒店或同级

第七天 鹰潭 南昌 (2.5小时)

(早/午/晚餐)

【龙虎山(含电瓶车+竹筏)】中国道教的重要繁衍地，其道教圣地、碧水丹山与古崖墓群被誉为三绝，享有中国第一仙山的美誉。

【仙水岩景区】水岩以其碧水丹山而闻名遐邇。这里怪石遍布，山水相映成趣，景点最为集中，有仙女岩、仙桃石、僧尼峰...等十大美景。【象鼻山景区】这里一座形象逼真、巨大无比的天然石像立于山中，硕大的象鼻似乎从天而降，又深深扎入大地之中，惟妙惟肖、灵性暗蕴，被世人称为「天下第一神像」.[泸溪河竹筏漂流]乘坐竹筏漂流在碧波荡漾、清澈见底的泸溪河上，一边欣赏两岸风光，一边听筏工讲龙虎山“十不得”背后的精彩故事，徜徉在山与水的怀抱里，仿佛置身于世外桃源。[古战国悬棺表演]崖墓葬是古越、僚人特有的一种丧葬形式，也是中国多种葬法中最古老、最特别的一种丧葬形式。

酒店：准4钻 南昌融创诺福特酒店或同级

第八天 南昌 吉隆坡

(早餐)

【滕王阁】江南三大名楼之首。因初唐才子王勃作「滕王阁序」让其在三楼中最早天下扬名。送往机场回返温暖的家。

\*\*\*自费项目：婺女洲《遇见\*婺源》山水实景演出+婺女洲摇撸船(单程)RMB 198/人

\*景点的先后顺序可根据具体情况有所调整\*倘若原定的景点不对外开放，将由其他景点取代\*旅游旺季期间，住宿酒店可能安排在其他城市。






## 8 DAYS 7 NIGHT


# The Journey Of Wonderland Jiangxi

DAY 1 KUALA LUMPUR  NANCHANG (-/-/D)  
 Assemble at KLIA for your flight to JingXi -Nanchang. Visit 【Nanchang Honggutan Wanda Plaza】 【Wanshou Palace FoodStreet and Cultural District】


Hotel Local 4\* : Novotel NanChang Sunac Hotel or sml

DAY 2 NANCHANG  JIUJIANG ( 2 Hours) (B/L/D)  
 【LuShan】 was listed into the World Heritage sites by the UNESCO in 1996. 【Ruqin Lake】 Ruqin Lake, named because its shape resembles a violin, is surrounded by green ridges and is graceful and graceful. The water reflects the peaks and peaks, forming a beautiful contrast. There is a small island in the center of the lake, decorated with water pavilions, and connected to the Jiuqu Bridge. There are misty clouds and mist, which is full of fun. 【Flower Path】 the eternal poetic masterpiece of Tang Dynasty famous poet Bai Juyi "the fragrance in the human world has withered in Aprils, while flowers in the mountain are in full bloom" describes the scenery here . 【Jinxiu Valley】 Due to the Quaternary glaciation, Jinxiu Valley, a mountainous depression facing the southwest, has been repeatedly carved by glaciers, forming a valley with a flat bottom and steep walls. 【Immortal's Cavern】 - this hole gains the name because Lu Tung-pin practiced austerities here and became immortal according to legend. The "Half the Sky Street" in 【Kuling】 is full of merchants, warm and prosperous, bustling with tourists, happy and peaceful. 【Meilu】 It is a famous cultural landscape unique to Lushan . It shows a side of the ever-changing modern history of China . "Mei Lu" was once the official residence of Chiang Kai-shek's summer capital and the "Chairman's Palace ". It was the "beautiful house" where the "First Lady" Soong Meiling lived.


Hotel Local 4\* : Lushan Landscape Luyiu Hotel or sml

DAY 3 LUSHAN  JINGDEZHEN (B/L/D)  
 【Yaoli Ancient Town】 is known as the "source of porcelain, the hometown of tea, and the sea of forests". Yaoli, also known as "Kiln" in ancient times, had handicraft workshops producing ceramics as far back as the middle of the Tang Dynasty. 【Wanghu Ecological Tourism Zone】 - belongs to the remnants of Huangshan Mountain. The area is full of peaks, mountains, rocks, and ancient trees. Raonan Ceramics Theme Park - The ruins of ancient kilns from the Song, Yuan, and Ming dynasties, as well as ancient mines and other porcelain industry relics are relatively well preserved here. 【Yaoli Town】 Yaoli's "Kaoling" is a world-famous ceramic holy land and the name of the world's "kaolin clay". 【Tao Xichuan】 It is the spiritual home of a generation of Jingdezhen ceramic people and the best place for Jingdezhen ceramic culture to be promoted, derived, and introduced to the world.


Hotel Local 4\*: Jingdezhen Holiday Inn Express or sml

DAY 4 JINGDEZHEN  WUYUAN ( 1.5 Hours) (B/L/D)  
 【Wuyuan Huangling】 (include cable car )is a combination of cableway aerial tours, village street visits to ancient times, terraced fields to find fragrance in the sea of flowers, and rural customs and folk customs. Huangling Ancient Village is a typical mountain village. The houses are arranged in a fan-shaped staircase around the water mouth. There are thousands of ancient trees, tens of thousands of acres of terraced fields around Huangling, and a sea of flowers all year round 【Wuyuan Moon Bay】 is named after a central island in the river that looks like a crescent moon. It is surrounded by mountains and rivers, and the water surface is as calm as a mirror.  
 【Wunuzhou Resort】 The cultural tourism vacation destination aims to present a cultural town with Huizhou characteristics to tourists from all over the world, and deeply experience the "Huizhou story in the bones". 【Iron flower】 one of the national intangible cultural heritages, began in the Northern Song Dynasty and flourished in the Ming and Qing Dynasties. It has a history of more than a thousand years. During the performance, the molten iron is heated to 1,600°C. The craftsmen scoop it up with a custom-made wooden board, then hit it hard and throw it into the air. In an instant, golden sparks more than ten meters high bloom in the night sky, which is beautiful, shocking and dazzling.

Hotel : Local 4\* Wunvzhou Resort Huiyi Homestay or sml


DAY 5 WUYUAN  SHANGRAO ( 2 Hours) (B/L/D)  
 【Wangxian Valley】 There are rammed earth walls, bluestone roads, yellow walls and black tiles, and original village houses unique to Jiangxi folk houses; there are also seas of pines and bamboos and unique Ganjia markets. 【NightTour Wangxian Valley】

Hotel : Local 4\* ShangRao Huayue Hotel or sml

DAY 6 SHANGRAO  YINGTAN (2Hours) (B/L/D)  
 【Lingshan Scenic Area】 oism is listed as the 33rd blessed place in the world. It is a place integrating vacation, leisure, sightseeing experience, and religious pilgrimage. mountainous scenic spots. Lingshan is very ancient and magical. Lingshan not only has beautiful landscapes, but also has many beautiful legends.

Hotel : Local 4\* Yingtan Jindu Jinyuan Hotel or sml




DAY 7 YINGTAN  NANCHANG ( 2.5 Hours) (B/L/D)

【Longhu Mountain】 (included buggy car + bamboo ride ) is an important breeding ground for Chinese Taoism. Its Taoist holy land, Bishuidan Mountain and ancient cliff tombs are known as the three wonders, and enjoys the reputation of the first fairy mountain in China.

【Xianshui Rock】 is famous for its clear water and Danshan Mountain. Strange rocks are everywhere here, the mountains and rivers complement each other, and the most concentrated scenic spots include Fairy Rock, Xiantao Rock, Monk and Nun Peak... and other ten scenic spots, which are called "Ten Unforgettable" .The miraculous 【Elephant Trunk Mountain】 has a natural charm that makes people marvel at the magic of nature. Let you experience the incomparable charm of Elephant Trunk Mountain on the way. Take a 【bamboo raft to float】 on the rippling blue waves and crystal clear Luxi River. While admiring the scenery on both sides of the bank, listen to the rafters telling the wonderful stories behind the "Ten Unforgettable" of Longhu Mountain. Wandering in the embrace of mountains and water, you feel as if you are in a... A paradise. 【Cliff tombs】 are a unique form of burial among the ancient Yue and Liao people. They are also the oldest and most special form of burial among various burial methods in China.

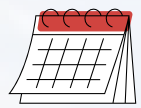
Hotel : Local 4\* Novotal Nanchang Sunac Hotel or sml

DAY 8 NANCHANG  KUALA LUMPUR (B/-/-)

【Tengwang Pavilion】 is the first of the three famous buildings in Jiangnan. Because Wang Bo, a talented man in the early Tang Dynasty, wrote the "Preface to Prince Teng's Pavilion", he was the first to become famous in the third floor. After lunch, send to airport home sweet home . Send to airport home sweet home .

\*\*\* OPTIONAL : "Meeting Wuyuan" SHOW in Wunuzhou . + rowing boat in Wu Nuzhou (ONE WAY) RMB 198/PAX

\*\*Attraction sequence subject to change. If a site is closed, an alternative will be arranged. During peak seasons, accommodations may be in other cities\*\*



出发日期 DEPARTURE DATE :



团费 TOUR FARE :




航班 FLIGHT DETAIL :

### 特色风味 SPECIAL FLAVOR



- 剁椒鱼头宴 Diced Chili Fish Head Banquet
- 庐山三石宴 Lushan Three Stones Banquet
- 景德镇瓷宴 Jingdezhen Porcelain Banquet
- 水墨特色宴 Ink and Wash Theme Banquet
- 鹰潭风味 The Flavor of Yingtan
- 八卦宴 The Eight Diagrams Banquet

运通假期  
CETT Holiday 

### ADDITIONAL INFO

- 1.Passport & Visas – Please ensure passport is valid for at least 6months from the return date of the trip and all necessary visas and permits have been acquired
- 2.Travel Insurance- Its recommended that you purchase a travel insurance before departure

1. 护照与签证-请确保护照有效期从回程日期算起至少6个以上及所有所需提前申请的签证和准证
2. 旅游保险-建议出发前购买旅游保险

### Term & Condition

- 1.Tours are conducted in mandarin.
- 2.Hotel accommodation on twin share or triple share basis. Single room occupancy is at additional cost.
- 3.Please note that triple room third bed shall be a roll-away bed.
- 4.Tour fare quoted is for Malaysian, foreigners surcharge applied.
- 5.In coach shopping- for your convenient, a variety of local snacks and products offered for sale on board the coach, if you need, please place your order with tour guide.
- 6.For other terms and conditions please refer to overall copy of tour booking conditions.

1. 导游将以中文讲解为主，如要求其他语言讲解，需征收额外费用。
2. 住宿安排2人一房或三人一房，单人间将收取额外费用。
3. 三人间-第三张床将是折叠式床。
4. 团费仅适用于马来西亚公民，外国人将征收额外费用。
5. 车上购物-将售卖当地产品，如有需要可以跟导游购买。
6. 有关其他报团细节，请参考完整报团细节。