

TOUR CODE: 8KWE (MAR)

运通假期

CETT Holiday



# 绚丽贵州之旅

## The Charming Of GuiZhou

- 贵阳 GUIYANG
- 荔波 LIBO
- 凯里 KAILI
- 安顺 ANSHUN
- 兴义 XINGYI

- 全程无进购物站 NO SHOPPING
- 有车购 IN-COACH SHOPPING
- 全程无自费项目 NO OPTIONAL
- 全程准4+准5星酒店LOCAL4+5STARS HOTEL

☎ 03-21455177



[www.chinaexpress.com.my](http://www.chinaexpress.com.my)





运通假期  
CETT Holiday



# 8天7晚贵州之旅

第一天 吉隆坡 广州 贵阳

齐集于吉隆坡第一航站楼国际机场，乘搭国际航班飞往广州，再转内陆航班到贵阳。

酒店：准5\*明宇尚雅大酒店或同级

第二天 贵阳 荔波 (约3小时)

(早/午/晚餐)

游览世界自然遗产【小七孔风景区】(含景区环保车)-国家5A级风景名胜区，以其独特的奇峰溶洞茂密的原始森林，丰富多样的生物，清澈的河流湖泊和瀑布而闻名，当中有著名的【拉雅瀑布】，【卧龙潭】，【水上森林】，【小七孔桥】和【翠谷瀑布】。

酒店：准5\*荔波饭店或同级

第三天 荔波 凯里 (约3小时)

(早/午/晚餐)

早餐后前往西江游览【西江千户苗寨】(含电瓶车)-此苗寨乃是世界最大的苗寨聚集地。【少数民族博物馆】-~黔东南州的人文地理及少数民族风情有一个比较详尽的介绍，文字、图片、实物都有陈列，共有藏品12000多件，收藏有元、明、清等时期的苗族、侗族民族服饰及部分祭祖和生活用具。

酒店：准4\*世茂大酒店或同级

第四天 凯里 安顺 (约3.5小时)

(早/午/晚餐)

早餐后，前往平坝(3小时车程)参观【万亩樱花园】(含环保车)-世界最大的樱花园，沿着小河湾，还可以欣赏油菜花田，是个拍照打卡的好地方。之后驱车前往安顺(车程约1小时)。

酒店：准5\*华通大酒店或同级

第五天 安顺 兴义

(早/午/晚餐)

早餐后，前往镇宁游览【黄果树瀑布景区】(含环保车+扶梯)-被列入世界吉尼斯，评委最大的一级瀑布，【陡坡塘瀑布】86版的西游记在这里取了很多的景，比如括片尾曲最后师徒四人过河都是在这里拍摄，来到这里会体验到记忆与现实重合。最神奇之处是隐在大瀑布半腰上的【水帘洞】，电视剧《西游记》片尾曲中的孙悟空曾穿梭于瀑布间，正是在此取景。

酒店：准4\*梦乐城大酒店或同级

第六天 兴义

(早/午/晚餐)

早餐后，前往游览【万峰林】(含环保车)-由成千上万座奇峰秀石组成，绵延数百公里，以气势宏大壮阔，整体造型完美，山峰密集奇特而倍受中外游客的青睐。【八卦田】(含小火车)-是一片天然形成的八卦田，平卧在纳灰寨农田中央，其造型神奇迷离，如神匠打造，层叠有序，对摄影发烧友来说无疑是摄影天堂。【马岭河】-国家级风景名胜区，被誉为“中华第一漂”。【天星画廊】(含上下电梯)-是地球7000万年前燕山运动时自然拉开的裂缝，兴义城将峡谷一分为二，是世界上唯一的城市峡谷，被誉为“地球上最美丽的伤疤”。

酒店：准4\*梦乐城大酒店或同级

第七天 兴义 贵阳 (约4小时)

(早/午/晚餐)

【万峰湖】(含船游)-美景天成，鱼肥水美，钓者云集，被誉为“野钓者的乐园”，湖内全岛、半岛、港湾、内湖交错，四季可游，船观【吉隆堡】之后车赴贵阳，打卡【青云市集】-一个好玩有趣，有颜值和食力的市集，不仅游客喜欢，也是本地人的心头好。夜游【甲秀楼】-中国10大名楼之一的建筑，是以一块天然鳌矶石为楼基的，因为此天然巨石形似鳌状，所以古称鳌矶石。

酒店：准5\*明宇尚雅大酒店或同级

第八天 贵阳 广州 吉隆坡

早餐后，前往机场，准备启程回到可爱的家。

\*景点的先后顺序可根据具体情况有所调整 \*倘若原定的景点不对外开放，将由其他景点取代 \*旅游旺季期间，住宿酒店可能安排在其他城市\*\*






# 8 days 7 nights The Charming of Guizhou

Day 1 Kuala Lumpur  Guangzhou  Guiyang  
Assemble at KLIA for your flight to Guangzhou, then take domestic flight to Guiyang.


(-/-/-)


Hotel : Local 5\* Galaxy Minyoun Hotel or sml

Day 2 Guiyang  Libo (Appxm 3hrs) (B/L/D)  
Explore World Natural Heritage Sites **【XiaoQikong】** (Included shuttle bus)- A National 5A-level scenic area renowned for its unique peaks, caves, dense virgin forests, diverse wildlife, and clear rivers, lakes, Special Flavor and waterfalls, Among them, notable attractions include the **【Laya Waterfall】**, **【The Sleeping Dragon Pond】**, **【the Water Forest】**, **【the Small Seven-Arch Bridge】**, and **【The Cuigu Waterfall】**.  
Hotel: Local 5\* Lipo Hotel or sml

Day 3 Libo  KaiLi (Appxm 3hrs) (B/L/D)  
After breakfast, heading to Xijiang to explore the **【Xijiang Qianhu Miao Village】** (included buggy car)- This Miao village is the world's largest gathering place for the Miao ethnic group. **【Ethnic Minority Museum】** - Ethnic Minority Museum in Qiandongnan Prefecture showcases cultural and geographical aspects, featuring 12,000+ exhibits, including Miao and Dong ethnic costumes from different historical periods.  
Hotel : Local 4\*ShiMao Hotel or sml

Day 4 KaiLi  AnShun (Appxm 3hrs) (B/L/D)  
After breakfast, embark to PingBa ( appxm 3.5hrs)- explore the **【Wanmu Sakura Garden】**, the world's largest cherry blossom garden. Along the river bay, savor scenic views of rapeseed flower fields – a perfect photo opportunity. Later, proceed to Anshun (appxm 1hour).  
Hotel : Local 5\* Huatong Hotel or sml

Day 5 AnShun  Xingyi (B/L/D)  
After breakfast, head to Zhenning to visit the **【Huangguoshu Waterfall Scenic Area】** (includes shuttle bus and escalator). Recognized by Guinness World Records, it boasts the world's largest waterfall by volume. At **【Tupotang Waterfall】** - scenes from the 1986 'Journey to the West' were shot, creating a nostalgic and immersive experience. The enchanting **【Water Curtain Cave】** halfway up the waterfall served as the backdrop for scenes in the TV series 'Journey to the West,' including the iconic shot of Sun Wukong crossing Xingyi through the waterfall in the closing credits.  
Hotel : Local 4\* Falcon Bast Dreamland Hotel or sml

Day 6 Xingyi  (B/L/D)  
After breakfast, visit to **【WanFengLin】** (included shuttle bus )- Thousands of unique peaks spanning hundreds of kilometers, captivating visitors with its grand and majestic scenery. **【BaGua Field】** (included tram) - a naturally formed wonder in the heart of Na Huizhai farmland, presents a mesmerizing and orderly landscape—a photography haven for enthusiasts. **【Maling River】** -National-level scenic area, acclaimed as the 'Top Drifting Destination in China. **【Tianxing Gallery】** -Earth's Most Beautiful Scar( Included elevator)  
Hotel : Local 4\* Falcon Bast Dreamland Hotel or sml

Day 7 Xingyi  Guiyang (B/L/D)  
**【WanFengLake】** (included boat ride)- Revered as the 'Haven for Wilderness Anglers.'  
**【Qingyun Market】** - Local people favourite market. Night tour **【JiaXiu Tower】**  
Hotel : Local 5\* Galaxy Minyoun Hotel or sml

Day 8 Guiyang  GuangZhou  Kuala Lumpur  
After breakfast, heading to the airport, preparing to embark on the journey back home.

\*\*Attraction sequence subject to change. If a site is closed, an alternative will be arranged. During peak seasons, accommodations may be in other cities\*\*





## 行程特色 HIGHLIGHTS

Tour Code : 8KWE (Mar)

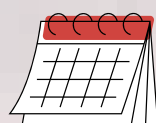


- ✓ 贵州第一个世界自然遗产 ➡ 荔波小七孔
- ✓ 世界最大苗族集地 ➡ 西江千户苗寨
- ✓ 中国最美十大峰林 ➡ 万峰林
- ✓ 亚洲第一大瀑布 ➡ 黄果树瀑布
- ✓ The first UNESCO World Natural Heritage in Guizhou ➡ Libo Xiaoqikong
- ✓ The world's largest Miao ethnic village cluster ➡ Xijiang Qianhu Miao Village
- ✓ China's Top Ten Most Beautiful Peak Forests ➡ WanFengLin
- ✓ Asia's Largest Waterfall ➡ Huangguoshu Waterfall

## 特色风味 Special Flavor



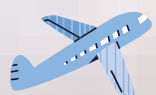
- 长桌宴 Long Table Banquet
- 平坝风味 Pingba Culinary Delights
- 黔菜风味 Flavors of Guizhou Cuisine
- 瀑布土鸡 PuBu Free Range Chicken
- 鱼宴风味 Fish Banquet Flavor



出发日期 Departure Date :



团费 Tour Fare:



航班Flight Details:

### ADDITIONAL INFO

- 1.Passport & Visas – Please ensure passport is valid for at least 6months from the return date of the trip and all necessary visas and permits have been acquired
2. Travel Insurance- Its recommended that you purchase a travel insurance before departure
1. 护照与签证-请确保护照有效期从回程日期算起至少6个 以上及所有所需提前申请的签证和准证
2. 旅游保险-建议出发前购买旅游保险

### TERM AND CONDITION

1. Tours are conducted in mandarine.
- 2.Hotel accommodation on twin share or triple share basis. Single room occupancy is at additional cost.
- 3.Please note that triple room third bed shall be a roll-away bed.
- 4.Tour fare quoted is for Malaysian, foreigners surcharge applied.
- 5.In coach shopping- for your convenient, a variety of local snacks and products offered for sale on board the coach, if you need, please place your order with tour guide.
- 6.For other terms and conditions please refer to overall copy of tour booking conditions.
1. 导游将以中文讲解为主，如要求其他语言讲解，需征收额外费用。
2. 住宿安排2人一房或三人一房，单人间将收取额外费用。
3. 三人间-第三张床将是折叠式床。
4. 团费仅适用于马来西亚公民， 外国人将征收额外费用。
5. 车上购物-将售卖当地产品，如有需要可以跟导游购买。
6. 有关其他报团细节，请参考完整报团细节。